

Biotinylated Mouse MSLN/Mesothelin Protein (Primary Amine Labeling)



Cat. No. MSL-MM180B

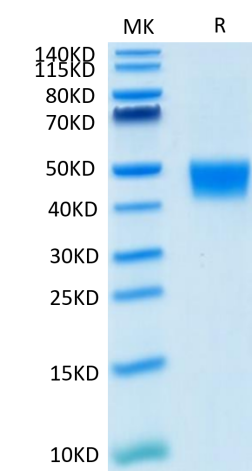
Description	
Source	Recombinant Biotinylated Mouse MSLN/Mesothelin Protein (Primary Amine Labeling) is expressed from HEK293 with His tag at the C-Terminus. It contains Asp298-Ser600.
Accession	Q61468-1
Molecular Weight	The protein has a predicted MW of 35.2 kDa. Due to glycosylation, the protein migrates to 45-60 kDa based on Bis-Tris PAGE result.
Endotoxin	Less than 1 EU per µg by the LAL method.
Purity	> 95% as determined by Bis-Tris PAGE > 90% as determined by HPLC

Formulation and Storage	
Formulation	Lyophilized from 0.22µm filtered solution in PBS (pH 7.4). Normally 8% trehalose is added as protectant before lyophilization.
Reconstitution	Dissolve the lyophilized protein in distilled water. Please refer to the Certificate of Analysis for detailed instructions.
Storage	-20 to -80°C for 12 months as supplied from date of receipt.-80°C for 3 months after reconstitution.Recommend to aliquot the protein into smaller quantities for optimal storage. Please minimize freeze-thaw cycles.

Background	
Mesothelin, also known as MSLN, is a protein that in humans is encoded by the MSLN gene.Cloning studies showed that the mesothelin gene encodes a precursor protein that is processed to yield mesothelin which is attached to the cell membrane by a glycoposphatidylinositol linkage and a 31-kDa shed fragment named megakaryocyte-potentiating factor (MPF). Although it has been proposed that mesothelin may be involved in cell adhesion, its biological function is not known.A knockout mouse line that lacks mesothelin reproduces and develops normally.	

Assay Data

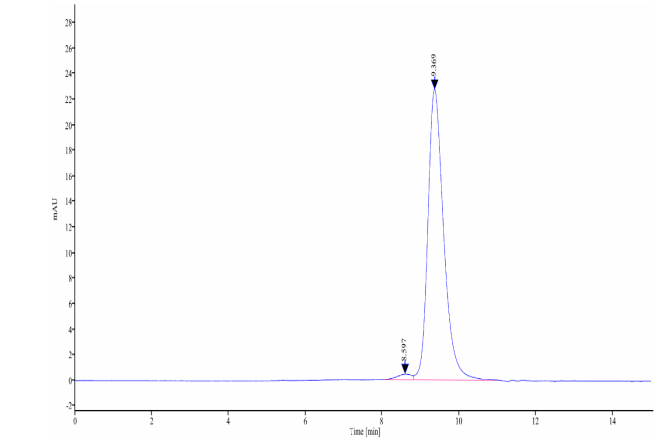
Bis-Tris PAGE



Biotinylated Mouse MSLN on Bis-Tris PAGE under reduced condition. The purity is greater than 95%.

SEC-HPLC

Assay Data



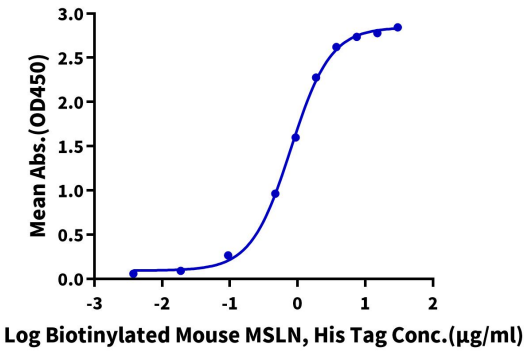
The purity of Biotinylated Mouse MSLN is greater than 90% as determined by SEC-HPLC.

Cat. No. MSL-MM180B

Assay Data

ELISA Data

Biotinylated Mouse MSLN, His Tag ELISA
0.5µg Human CA125, His Tag Per Well



Immobilized Human CA125, His Tag at 5µg/ml (100µl/well) on the plate. Dose response curve for Biotinylated Mouse MSLN, His Tag with the EC50 of 0.79µg/ml determined by ELISA (QC Test).